



ASPENRIDGE

SIMCOE LANDING  
PRICE LIST

45' DETACHED

Mariposa	Elev. A	4 Bedroom	2599 sq.ft.	\$ 1,179,990
	Elev. B	4 Bedroom	2538 sq.ft.	\$ 1,169,990
	Elev. C	4 Bedroom	2570 sq.ft.	\$ 1,199,990
Fairstar	Elev. A	4 Bedroom	2756 sq.ft.	\$ 1,209,990
	Elev. B	4 Bedroom	2725 sq.ft.	\$ 1,189,990
	Elev. C	4 Bedroom	2771 sq.ft.	\$ 1,223,990
	Elev. D	4 Bedroom	2784 sq.ft.	\$ 1,242,990
Laconia	Elev. A	4 Bedroom	3001 sq.ft.	\$ 1,239,990
	Elev. B	4 Bedroom	2979 sq.ft.	\$ 1,237,990
	Elev. C	4 Bedroom	3018 sq.ft.	\$ 1,259,990
	Elev. D	4 Bedroom	3011 sq.ft.	\$ 1,264,990
		Opt. 5 Bedroom Plan available add:		\$ 3,000
Serene CNR SP	Elev. A	4 Bedroom	3053 sq.ft.	\$ 1,264,990
	Elev. B	4 Bedroom	2997 sq.ft.	\$ 1,244,990
	Elev. C	4 Bedroom	3073 sq.ft.	\$ 1,284,990
		Opt. 5 Bedroom Plan available add:		\$ 2,000
Valhalla	Elev. A	4 Bedroom	3236 sq.ft.	\$ 1,279,990
	Elev. B	4 Bedroom	3186 sq.ft.	\$ 1,260,990
	Elev. C	4 Bedroom	3229 sq.ft.	\$ 1,299,990
		Opt. 5 Bedroom Plan available add:		\$ 2,000
		Opt. Main Floor Plan add:		\$ 7,000
	Opt. Main Floor Plan & Opt. 5 Bedroom Plan add:		\$ 9,000	
Lionstar	Elev. A	4 Bedroom	3422 sq.ft.	\$ 1,299,990
	Elev. B	4 Bedroom	3347 sq.ft.	\$ 1,285,990
	Elev. C	4 Bedroom	3408 sq.ft.	\$ 1,319,990
	Elev. D	4 Bedroom	3419 sq.ft.	\$ 1,321,990
		Opt. 5 Bedroom Plan available add:		\$ 2,000

DEPOSIT STRUCTURE: \$30,000 with agreement  
 \$30,000 in 60 days  
 \$30,000 in 90 days  
 \$30,000 in 150 days

13-Feb-26

VENDOR'S AGENT  
 Barbara Smith  
 Sales Representative  
 Aspen Ridge Realty Inc., Brokerage  
 Phone: (905) 535-1383  
 Email: SLSales@aspenridgehomes.com

Prices Include Federal Goods and Services Tax, Provincial sales taxes and Educational Levies.  
 Some lots may be subject to premiums.  
 Prices & specifications subject to change without notice. E.&O.E.



ASPENRIDGE

# SIMCOE LANDING PRICE LIST

## 50' DETACHED

Doric	Elev. A	4 Bedroom	3245 sq.ft.	\$	1,429,990
	Elev. B	4 Bedroom	3205 sq.ft.	\$	1,375,990
	Elev. D	4 Bedroom	3245 sq.ft.	\$	1,397,990
Montrose CNR	Elev. A	4 Bedroom	3401 sq.ft.	\$	1,429,990
	Elev. B	4 Bedroom	3384 sq.ft.	\$	1,433,990
	Elev. D	4 Bedroom	3411sq.ft.	\$	1,449,990
			Opt. 5 Bedroom Plan available add:	\$	2,000
Caronia	Elev. A	4 Bedroom	3452 sq.ft.	\$	1,409,990
	Elev. B	4 Bedroom	3395 sq.ft.	\$	1,407,990
	Elev. D	4 Bedroom	3452 sq.ft.	\$	1,438,990
			Opt. 2nd Floor Plan available add:	\$	2,000
Ivernia	Elev. A	4 Bedroom	3697 sq.ft.	\$	1,443,990
	Elev. B	4 Bedroom	3644 sq.ft.	\$	1,419,990
	Elev. D	4 Bedroom	3697 sq.ft.	\$	1,459,990
			Opt. 5 Bedroom Plan available add:	\$	2,000

DEPOSIT STRUCTURE: \$30,000 with agreement  
 \$30,000 in 60 days  
 \$30,000 in 90 days  
 \$50,000 in 150 days

VENDOR'S AGENT  
 Barbara Smith  
 Sales Representative  
 Aspen Ridge Realty Inc., Brokerage  
 Phone: (905) 535-1383  
 Email: SLSales@aspenridgehomes.com

13-Feb-26

Prices Include Federal Goods and Services Tax, Provincial sales taxes and Educational Levies.  
 Some lots may be subject to premiums.  
 Prices & specifications subject to change without notice, E.&O.E.



ASPENRIDGE

SIMCOE LANDING  
PRICE LIST

45' BUNGALOWS

Maine	Elev. A	2 Bedroom	1566 sq.ft.	\$	1,004,990
	Elev. E	2 Bedroom	1566 sq.ft.	\$	999,990
	Elev. F	2 Bedroom	1566 sq.ft.	\$	1,009,990
Maine MOD	Elev. A	2 Bedroom	1566 sq.ft.	\$	1,021,990
	Elev. E	2 Bedroom	1566 sq.ft.	\$	1,016,990
	Elev. F	2 Bedroom	1566 sq.ft.	\$	1,026,990
Maine w/Loft	Elev. A	4 Bedroom	2083 sq.ft.	\$	1,069,990
	Elev. E	4 Bedroom	2083 sq.ft.	\$	1,069,990
	Elev. F	4 Bedroom	2083 sq.ft.	\$	1,079,990
Maine w/Loft MOD	Elev. A	4 Bedroom	2083 sq.ft.	\$	1,086,990
	Elev. E	4 Bedroom	2083 sq.ft.	\$	1,086,990
	Elev. F	4 Bedroom	2083 sq.ft.	\$	1,096,990

50' BUNGALOWS

Victory	Elev. A	2 Bedroom	1811 sq.ft.	\$	1,099,990
	Elev. E	2 Bedroom	1811 sq.ft.	\$	1,099,990
	Elev. F	2 Bedroom	1812 sq.ft.	\$	1,106,990
			Opt. 3 Bedroom Plan available add:	\$	2,000
Victory MOD	Elev. A	2 Bedroom	1811 sq.ft.	\$	1,135,990
	Elev. E	2 Bedroom	1811 sq.ft.	\$	1,135,990
	Elev. F	2 Bedroom	1812 sq.ft.	\$	1,142,990
			Opt. 3 Bedroom Plan available add:	\$	2,000
Victory w/Loft	Elev. A	4 Bedroom	2364 sq.ft.	\$	1,169,990
	Elev. E	4 Bedroom	2364 sq.ft.	\$	1,169,990
	Elev. F	4 Bedroom	2366 sq.ft.	\$	1,176,990
			Opt. 5 Bedroom Plan available add:	\$	2,000
Victory w/Loft MOD	Elev. A	4 Bedroom	2364 sq.ft.	\$	1,205,990
	Elev. E	4 Bedroom	2364 sq.ft.	\$	1,205,990
	Elev. F	4 Bedroom	2366 sq.ft.	\$	1,212,990
			Opt. 5 Bedroom Plan available add:	\$	2,000

DEPOSIT STRUCTURE: \$30,000 with agreement  
 \$30,000 in 60 days  
 \$30,000 in 90 days  
 \$30,000 in 150 days

13-Feb-26

VENDOR'S AGENT  
 Barbara Smith  
 Sales Representative  
 Aspen Ridge Realty Inc., Brokerage  
 Phone: (905) 535-1383  
 Email: SLSales@aspenridgehomes.com

Prices Include Federal Goods and Services Tax, Provincial sales taxes and Educational Levies.  
 Some lots may be subject to premiums.  
 Prices & specifications subject to change without notice. E.&O.E.

LIMITED TIME  
**OFFER**



# Sterling COLLECTION

## Sterling Collection

The Sterling Collection is a thoughtfully curated suite of high-end finishes & design upgrades created for homeowners who value quality, style, and ease. Our premium interior selections have been carefully chosen to elevate your home beyond the standard—with a cost savings not available outside the collection.

## Inclusions

All the great standard Features & Finishes of our standard collection plus:

- 45' Maine / Maine with Loft (MOD: 9' Ceilings on Main Floor)
- 50' Victory / Victory with Loft (MOD): 9' Ceilings on Main Floor & 9' Basement pour
- Upgraded Kitchen Layout
- Upgraded Primary Ensuite
- Level 3 stone countertops in kitchen & vanities, includes undermount sink(s)
- 5" Wide Engineered Oak throughout (excl. tiled areas)
- Level 3 porcelain tile in all tiled areas
- 10 Interior pot lights
- Dimplex 33" electric fireplace with Villa Nova stone cast mantle (flat wall application as shown on plan)
- A/C



## Pricing

### 45' Maine (MOD) Sterling Collection:

Elev. A - 2 Bed - 1566 sq.ft. \$1,048,990  
Elev. E - 2 Bed - 1566 sq.ft. \$1,043,990  
Elev. F - 2 Bed - 1566 sq.ft. \$1,053,990

### 45' Maine (MOD) with Loft Sterling Collection:

Elev. A - 4 Bed - 2083 sq.ft. \$1,118,990  
Elev. E - 4 Bed - 2083 sq.ft. \$1,118,990  
Elev. F - 4 Bed - 2083 sq.ft. \$1,128,990

### 50' Victory (MOD) Sterling Collection:

Elev. A - 2 Bed - 1811 sq.ft. \$1,163,990  
Elev. E - 2 Bed - 1811 sq.ft. \$1,163,990  
Elev. F - 2 Bed - 1811 sq.ft. \$1,170,990

Opt. 3 bedroom plan add \$2000

### 50' Victory (MOD) with Loft Sterling Collection:

Elev. A - 4 Bed - 2364 sq.ft. \$1,237,990  
Elev. E - 4 Bed - 2364 sq.ft. \$1,237,990  
Elev. F - 4 Bed - 2364 sq.ft. \$1,244,990

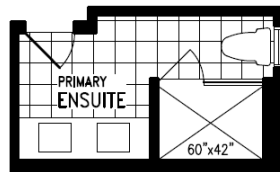
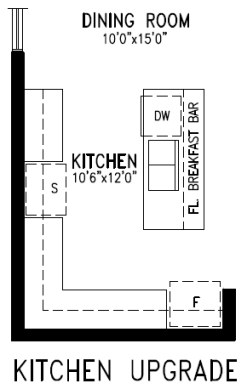
Opt. 5 bedroom plan add \$2000

LIMITED TIME  
**OFFER**



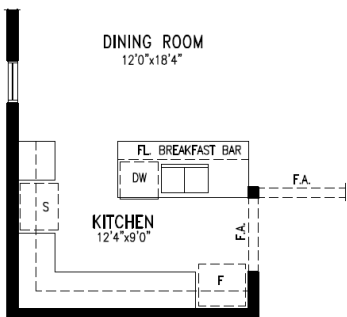
# Sterling COLLECTION

## Maine (MOD) & Maine with Loft (MOD) Upgraded Kitchen & Primary Ensuite Layout:

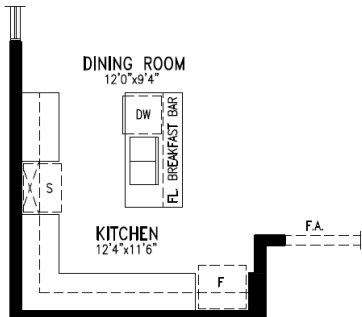


ENLARGED PRIMARY ENSUITE  
SHOWER W/ CURBLESS GLASS  
ENCLOSURE & DOUBLE SINKS  
UPGRADE

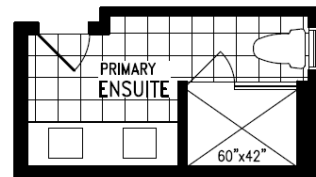
## Victory (MOD) & Victory with Loft (MOD) Upgraded Kitchen & Primary Ensuite Layout:



KITCHEN UPGRADE (4 BED)  
(STD. GROUND FLOOR ONLY)



KITCHEN UPGRADE (5 BED)  
(ALT. GROUND FLOOR ONLY)



ENLARGED PRIMARY ENSUITE SHOWER  
W/ CURBLESS GLASS ENCLOSURE  
& DOUBLE SINKS UPGRADE  
(4 BED & 5 BED)

SIMCOE  
LANDING  
EXPERIENCE THE NEW KESWICK



ASPENRIDGE®

# SIMCOE LANDING

45' & 50' BUNGALOWS  
BONUS PACKAGE

**\$5,000**

IN FREE UPGRADES  
AT OUR DESIGN STUDIO

+

**5 FREE APPLIANCES**

(FRIDGE, RANGE WITH HOOD FAN, DISHWASHER, WASHER AND DRYER)

**KitchenAid®**

**Whirlpool®**

13-Feb-26

Prices Include Federal Goods and Services Tax, Provincial sales taxes and Educational Levies.

Prices & specifications subject to change without notice. E.&O.E.